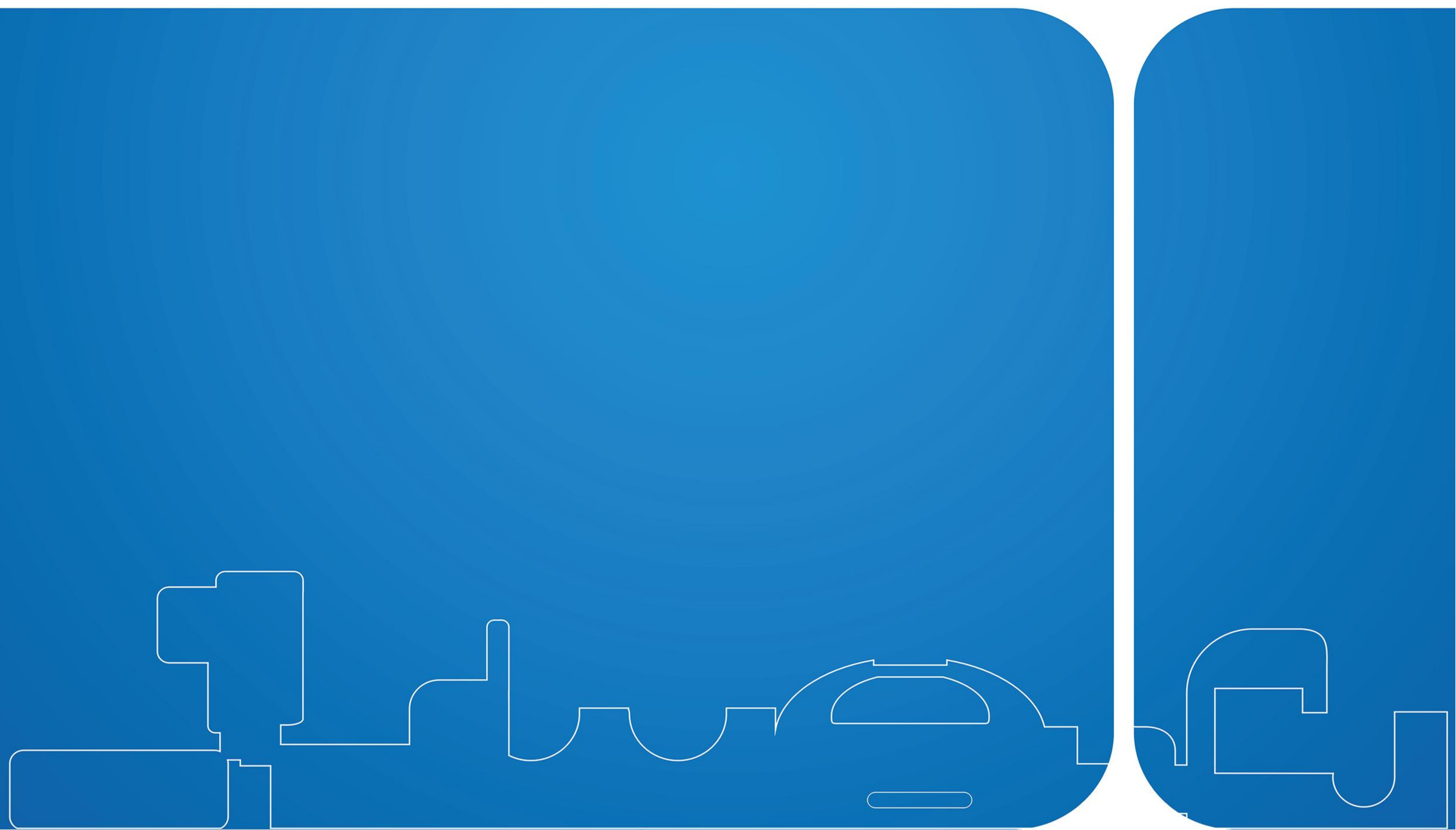




BUENTEX, BUEN MACHINERY!



**无锡市易斯陆进出口贸易有限公司**  
**Buentex Machinery Trading Co.,Ltd**



# COMPANY PROFILE

## 公司简介

无锡市易斯陆进出口贸易有限公司是经营进出口贸易的专业外贸公司，有丰富的进出口经验。

**Buentex Machinery Trading Co.,Ltd is a specialized trading company, which has rich experience in international trade.**

本公司主要经营纺织染整设备的进出口业务：各类染色机、水洗机、烘干机、定型机、相关设备与零配件；其他允许进出口的产品和技术等。

**Our company is mainly engaged in import and export business of textile dyeing and finishing equipments: different kinds of dyeing machines, washing machines, dryers, stenter frames, related machineries and their spare parts; other products and technology permitted to import and export etc.**

本公司多年来与国内多家优质的染整设备厂保持紧密联系，熟知染整行业动态，可以为海外客户提供一站式服务：提供解决方案，寻找质优价美的货源，协助业务洽谈，现场翻译，技术文件、说明书等资料翻译，订立合同，收汇付款，验收货物，出口报关，货物运输，售后服务等。

**For many years we maintain close contact with multiple domestic manufactures of dyeing and finishing equipments, know well about the dyeing and finishing industry trends; and we can provide one-stop service: provide solutions, look for supply of goods with high quality and attractive price, assist business negotiation, on-site interpretation, documents translation such as technical documents , specifications etc, make contracts, collect and send the payment, inspect goods, supply export customs declaration, transport goods, after-sales service .**

公司以“合作，共享，诚信，共赢”为服务宗旨，把有效资源化零为整，为客户优选好产品。希望与更多的各界同仁真诚合作，以平等互利的原则与各贸易伙伴共谋发展，开创更加辉煌的未来。

**Buentex takes the " Cooperation, sharing, integrity, win-win" purpose for the services tenet; puts the efficient resource into one, optimizes good products for customers. We sincerely hope to cooperate with more customers, together develop on the principle of equality and mutual benefit, and create a better future.**



## BTJ 高温高压溢流染色机

### BTJ High Temperature Jet Dyeing Machine

### BTJ Jet de tintura de alta temperatura y presión

#### 适用范围

适用织物：梭织，针织；厚质、薄质；天然、合成纤维、及混纺布匹；适用材质：涤纶、棉、黏胶、羊毛、腈纶、尼龙、天丝、人造丝、莫代尔、及混纺织物。

#### Application

Applicable fabrics: woven fabric, knitted fabric; thick and heavy fabric, thin and light fabric; natural fiber, synthetic fiber and blended fabrics. Suitable materials: polyester, cotton, viscose, wool, acrylic, nylon, tencel, rayon, modal, and blended fabrics.



#### 技术参数

1. 浴比：1:7~12
2. 设计速度：0-350 米/分钟
3. 设计温度：140℃
4. 工作温度：135℃
5. 升温率：25℃-100℃平均 5℃/分钟，100℃-130℃平均 2.5℃/分钟（干燥饱和蒸汽压力 0.7Mpa）
6. 降温率：130℃-100℃平均 3℃/分，100℃-85℃平均 2℃/分钟（冷却水压力 0.3Mpa，温度 25℃）

#### Technical Parameters

1. Liquor ratio: 1:7~12
2. Design speed: 0-350m/min
3. Design temperature: 140℃
4. Working temperature: 135℃
5. Temperature heating rate: 5℃/min on average from 25℃ to 100℃, 2.5℃/min on average from 100℃ to 130℃ (Pressure of dry saturated vapor: 0.7Mpa)
6. Temperature cooling rate: 3℃/min on average from 130℃ to 100℃, 2℃/min on average from 100℃ to 85℃ (Cooling water pressure: 0.3Mpa, Temperature: 25℃)

#### 主要规格

#### Main Specifications

型号 Model	管数 Tube quantity	载量 Capacity: kg	主泵功率 Main pump power: kw	外形尺寸(长宽高) Dimension: mm		
				L	W	H
BTJ-1	1	200-250	15	7400	2000	2300
BTJ-2	2	400-500	30	7400	3440	2300
BTJ-4	4	800-1000	55	7400	6430	2300

上述尺寸为标准机型,该设备可根据用户要求适当加长。

Above dimensions are standard sizes, the machine can be properly lengthened according to customer's request.

所列规格如果改良或修改，不再另行通知。

Specifications are subject to change without further notice.



# BTO 低浴比染色机

## BTO Low Liquor Ratio Dyeing Machine

### BTO Máquina de teñido de baja relación de baño

#### 应用

本机为环保匀流染色机，低浴比。适用于天然纤维、合成纤维纯纺及混纺针织物或机织物的染色、前处理及后处理加工工艺。

#### Application

This machine is environmental uniform flow dyeing machine with low liquor ratio. It is suitable for dyeing, pre-treatment and post-treatment of natural fiber, synthetic fiber and blended knitted fabric or woven fabric.



#### 技术参数

1. 最高工作温度: 135°C
2. 最高工作压力: 0.30MPa
3. 浴比范围: 1:4.5~1:6
4. 单管最大容布量: 250 kg
5. 织物线速度: 70~350 m/min

#### Technical Parameters

1. Max. working temperature: 135°C
2. Max. working pressure: 0.3Mpa
3. Liquor ratio: 1:4.5~1:6
4. Max. capacity of each tube: 250kg
5. Linear speed of fabric: 70~350 m/min

#### 主要产品特点

1. 高品质染色：本机解决了小浴比染色机对于高密度及化学纤维织物易起折痕的缺点。
2. 内置交换式叠布系统：更大限度提高了布槽载量。
3. 可调节变载存布槽：适合各类厚、薄型织物的高质量染色。
4. 创新设计的染色喷嘴：具有间隙可调、清理方便、性能稳定的特点。
5. 加料回流稀释系统：可确保在极低浴比情况下充分使颜料和染液混合均匀，从而减少染色过程中的色花、色差。
6. 全自动化：先进的自动化高精度控制，保证了染色的高重现性和染色品质。

#### Main Features

1. High quality dyeing: this machine can easily solve the disadvantages that other small bath ratio dyeing machine causes the crease problem in dyeing high density and chemical fiber fabric.
2. Built-in interactive stack system: the load capacity of the cloth is greater increased.
3. Adjustable Variable load storage slot: suitable for all kinds of thick and thin fabrics with high quality dyeing.
4. Innovative design of the dyeing nozzle: adjustable gap, easy to clean, stable performance.
5. Feeding back flow dilution system: to ensure that under the extremely low bath ratio, the pigment and dye liquor fully mix evenly, thereby reduce the dyeing process of color mixed, color difference.
6. Full automation: advanced automation with high precision control, which ensures high reproducibility and quality of dyeing.

#### 规格

#### Main Specifications

型号 Model	管数 Tube Qty.	载重 Capacity: kg	功率 Power: kw	外形尺寸 Dimension: mm		
				L	W	H
BTO-100	1	100	9.05	2400	4650	3160
BTO-150	1	150	9.05	2800	4650	3160
BTO-300	1	300	13.05	3630	4420	2970
BTO-600	2	600	24.10	4970	4420	2970
BTO-900	3	900	30.03	6490	4590	3070
BTO-1200	4	1200	35.22	8450	5100	3500
BTO-1800	6	1800	53.17	11800	5350	3500
BTO-2400	8	2400	69.07	14480	5350	3500



## 高温高压卷染机 High Temperature Jigger Dyeing Machine Jigger máquina de teñido de alta temperatura

### 应用

本机型主要用于尼龙、弹力布、丝绸、棉、涤、麻及混纺织物进行平幅退浆、煮炼、漂白、染色等工艺。

### Application

This high temperature jigger dyeing machine is mainly for open width nylon, spandex, silk, cotton, polyester, flax and blended fabric in desizing, bleaching, scouring, dyeing, etc.



主辊直径 Diameter of main roller		Φ245 - 325mm
最大卷布直径 Max. diameter of cloth roll		Φ800 - 1200mm
机械门幅 Main roller width		1600 - 3600mm
织物布幅 Max. working fabric width		1400 - 3400mm
织物速度 Adjustable fabric rate		0 - 130m/min
织物张力 Tension of fabrics		0-60kg
最高工作温度 Max. working temperature		135℃
外形尺寸 (L*W*H) Boundary dimension	HD618-800	(3400+机械门幅*2)*2100*2200
	HD618-1000	(3450+机械门幅*2)*2400*2500
	HD618-1200	(3500+机械门幅*2)*2700*2800

## 常温常压卷染机 Atmospheric Pressure Jigger Dyeing Machine Jigger máquina de teñido de atmosférica temperatura

### 应用

该产品适用于平幅的丝绸、棉布、尼龙、人造及合成丝等织物，它在可靠的恒张力，恒线速下进行分散、硫化、还原、直接、活性等染色以及炼白水洗等工艺。

### Application

The atmospheric jigger dyeing machine is suitable for various open width silk, cotton, nylon, artificial and synthetic fabrics in the processes of dyeing with distributed, sulfur, vat, direct, and reactive dyes, scouring, bleaching and cleansing at a constant rate and under a constant tension.



主辊直径 Diameter of main roller		Φ245 - 325mm
最大卷布直径 Max. diameter of cloth roll		Φ1000 - 1200mm
机械门幅 Main roller width		1600 - 3600mm
织物布幅 Max. working fabric width		1400 - 3400mm
织物速度 Adjustable fabric rate		0-130m/min
织物张力 Tension of fabrics		0-60kg
设计温度 Design temperature		100℃
外形尺寸 (L*W*H) Boundary dimension	NSWR1000	(机械门幅+1650)*1900*2100
	NSWR1200	(机械门幅+1650)*2100*2200
	NSWR1400	(机械门幅+1850)*2800*2300
	NSWR1500	(机械门幅+1850)*2900*2350



## GM38 常温溢流染色机

## GM38 Normal Temperature Overflow Dyeing Machine

## GM38 Máquina de fluido y teñido de temperatura atmosférica

### 适用范围

本机是专为常压下和最高温度 98℃ 时以喷射、溢流的设计方式处理各种机织、针织布匹。适用于各种厚质、薄质、天然或合成纤维及混纺布匹漂白、染色、水洗等工艺过程。

### Application

This machine is specially designed for various woven and knitted fabrics under normal pressure and maximum temperature of 98℃ by jet and overflow. Suitable for bleaching, dyeing, washing and other processes of thick, thin, natural or synthetic fibers and blended fabrics.

### 技术参数

1. 浴比: 1:7~10
2. 设计速度: 0~300 m/min
3. 设计温度: 100℃
4. 工作温度: 98℃

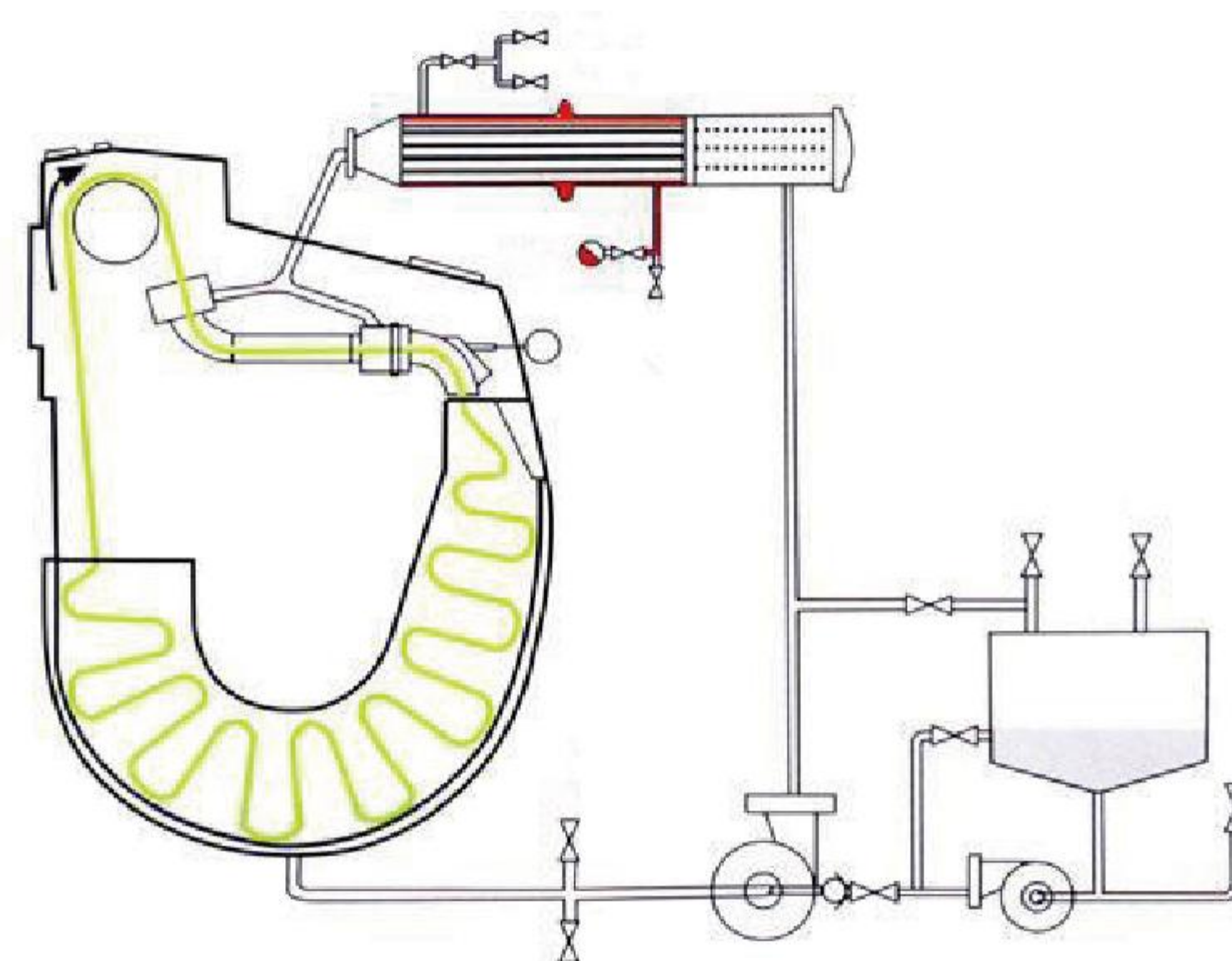
### Technical Parameters

1. Liquor ratio: 1:7~10
2. Design speed: 0~300m/min
3. Design temperature: 100℃
4. Working temperature: 98℃

### 主要规格

### Main Specifications

型号 Model	管数 Tube Qty.	载量 Capacity: kg	主泵功率 Main pump power: kw	外形尺寸(长宽高) Dimension (LWH)
GM38-1	1	200-250	8.8	4450×2685×3600
GM38-2	2	400-500	15	5930×3655×3600
GM38-4	4	800-1000	30	7930×3655×3600
GM38-6	6	1200-1500	52.5	9930×3655×3600



## HS-12P/24P 高温试色机

## HS-12/24P High Temperature Sample Dyeing Machine

## HS-12/24P Máquina de teñido de muestras de alta temperatura

### 用途

此机是现今染色中使用广泛的试验机，用于高温和常温染色。能快速试验小样，配合大生产。可单独取放染杯，操作性优良，可兼做水洗牢度试验机、干洗牢度试验。

### Application

This machine is widely used in dyeing and applicable for high temperature and normal temperature dyeing. It can test the sample fast and assist mass product. It can be used as wash fastness tester and dry cleaning fastness tester with separating dyeing cups.

### 技术参数

1. 使用温度: 140℃
2. 杯位数: 12 杯位或 24 杯位或 4 杯位
3. 加热方式: 电加热, 升温速率可达 4.0℃/分
4. 加热功率: 9KW
5. 染杯规格 ml: 300、500、6000、9000
6. 杯垫尺寸: φ69.2、φ70、φ162

### Technical Parameters

1. Operating temperature: 140℃
2. Quantity of cup positions: 12 or 24 or 4
3. Heating method: electrical heating, rising speed 4.0℃/min
4. Heating power: 9kw
5. Spec. of dyeing cups: 300ml, 500ml, 6000ml, 9000ml
6. Dimension of cup pads: φ69.2, φ70, φ162





## LMH807 平幅水洗机

### LMH807 Open Width Washing Machine

### LMH807 Lavadora continua para tela plano

#### 用途

该机采用喷淋洗涤的方式，布液动态交换充分，经过不同的排列组合，可适用于针织物及梭织物平幅去油、预缩、平幅氧漂、印花后水洗等工艺。

#### Application

This machine is spray washing type washer, fabrics and liquor fully dynamic exchange in different permutations in washing tanks. It's suitable for washing knitted and woven fabrics, removing oil, preshrinking, oxygen bleaching, and washing after printing process.



#### 设备流程

平幅进布架→光电平移对中机→高效转鼓淋洗箱→二辊密闭式轧车→高效转鼓淋洗箱→二辊密闭式轧车→喷淋管→真空吸水装置→摆式落布架

#### Process Flow

Open width feeding frame → photoelectric centering machine → high efficiency drum drip washing box → two rollers seal type padder → high efficiency drum drip washing box → two rollers seal type padder → spray pipe → vacuum water suction device → pendulous doffing frame

#### 技术参数

1. 设备幅宽：1800~3600mm
2. 设计车速：8~50m/min
3. 传动方式：交流变频，PLC 控制
4. 低水位，低张力，节能效果好

#### Technical Parameters

1. Machine width: 1800~3600mm
2. Machine speed: 8~50m/min
3. Drive: AC frequency, PLC controls
4. Low water level, low tension, save energy

## LMH698 松式绳状水洗机

### LMH698 Loose Type Rope Washing Machine

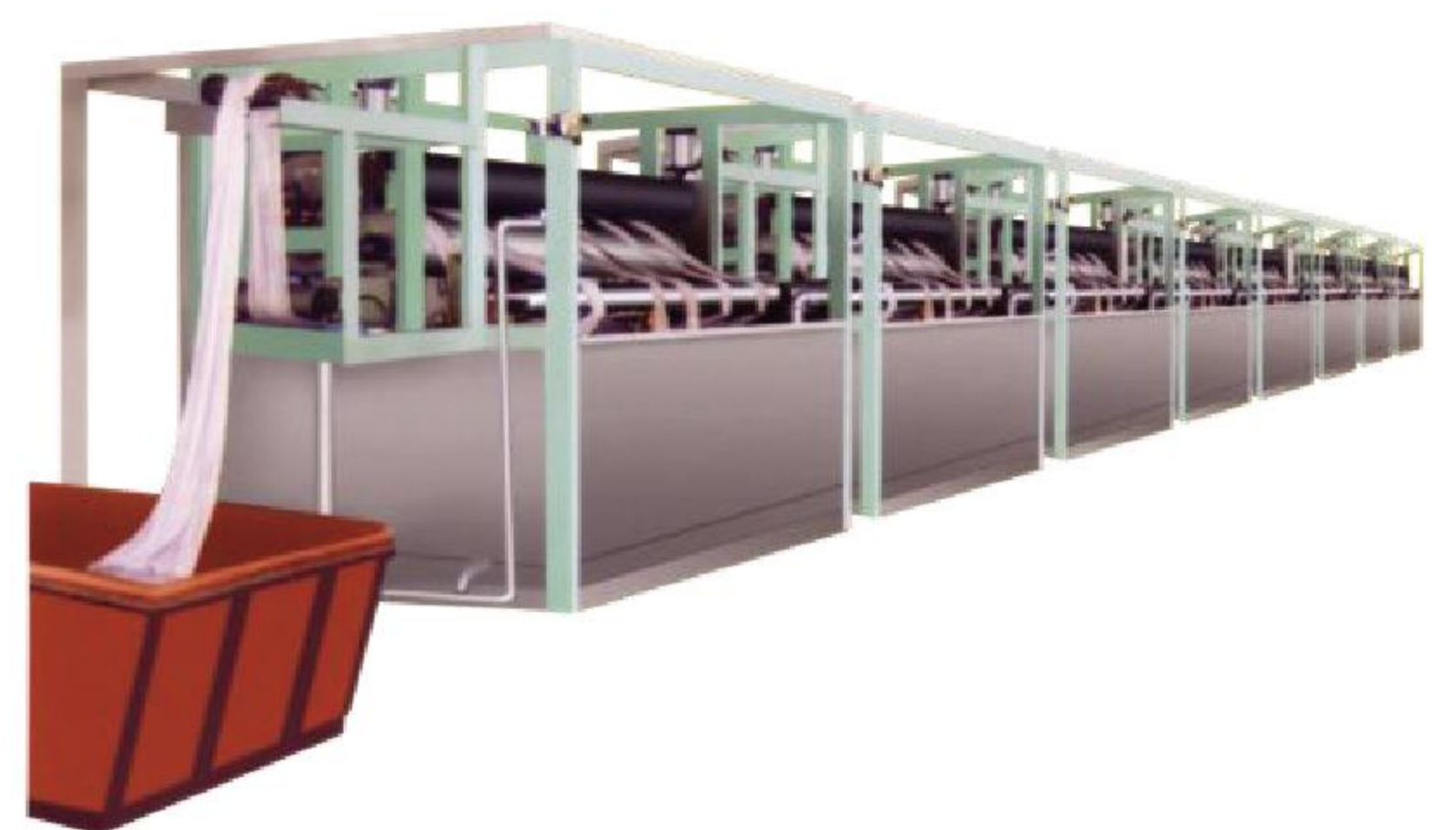
### LMH698 Lavadora a la continua en cuerda

#### 用途

该机能广泛应用于各种丝绸织物、毛巾及针织坯布（大圆机或台车产品）的圆筒织物及剖幅后印花坯布经固色后的松式绳状水洗，或上述产品的漂洗、漂白工艺的应用。

#### Application

Applicable to loose type rope form wash, bleach different kinds of fabrics after fixing color, such as: tubular fabric, grey knitted fabric, open width fabric, silk fabric, towel etc.



**设备流程：**绳状进布→绳状水洗箱→二辊轧车→绳状落布

**Process Flow:** Rope form feeding → rope form washing box → two-roller padder → rope form doffing

#### 技术参数

1. 进出布方式：绳状进布，绳状出布
2. 公称幅宽：1800mm~3400mm
3. 工艺车速：20~70m/min
4. 热源：蒸汽 0.2~0.3Mpa
5. 工作温度：70~98℃

#### Technical Parameters

1. Feeding and outlet mode: rope feeding and doffing
2. Nominal width: 1800~3400mm
3. Process speed: 20~70m/min
4. Heat source: steam 0.2~0.3Mpa
5. Working temperature: 70~98℃



## XGZ 全自动变频脱水机

### XGZ Full Automatic Hydro Extractor

### XGZ Extractor centrifugo de agua

#### 产品用途

本机适用于绞纱、机织织物、针织布、丝束、成衣的脱水之用。

#### Application

The unit is used for dehydrating various textiles such as hank yarn, cone yarn, woven fabric, knitted fabric, garment etc.

#### 规格

#### Main Specifications

型号 Model	转笼内径 Inner diameter mm	容量(湿重) Capacity: kg (wet weight)	转笼高度 Carriage height mm	功率 Power kw	转速 Rotating speed rpm	外形尺寸 Dimension mm
XGZ-800	800	80	380	4	750-960	1380x1400x950
XGZ-1000	1000	100	380	5.5	750-960	1560x1600x1000
XGZ-1200	1200	150	450	7.5	750-960	1700x1750x1000
XGZ-1500	1500	500	700	11	600-750	2100x2150x1300
XGZ-1800	1800	900	900	15	550-700	2300x2350x1550
XGZ-2000	2000	1100	940	18.5	500-650	2400x2450x1600



## SM-Z 绳状退捻开幅机

### SM-Z Rope Form Detwisting and Opening Machine

### SM-Z Destorcedor y abridor de cuerda para tejido tubular

#### 产品用途

该机广泛用于棉、麻、毛、化纤及丝绸等织物的绳状练漂和溢流染色后将绳状织物褪捻展开成平幅。整机性能稳定，采用变频器调速，具有自动褪捻、光电对中、织物悬垂疏松等先进装置。与进口同类机型相比较占地面积较小、高度适中。

#### Application

This machine extensively used for untwisting and spreading the rope form textiles such as cotton, jute, wool, chemical fiber, silk after rope scouring, bleaching and overflow dyeing. The machine has stable performance, frequency speed control system, automatic detwisting, photoelectrical centering, textile loose overhanging device. Small floor coverage, moderate height.

#### 技术参数

1. 机器幅度：1800~2800mm。
2. 设计车速：20~80m/min。
3. 进布与落布：绳状进布、平幅落布。
4. 褪捻方式：自动褪捻，亦可用手掀按钮褪捻。
5. 对中装置：对中机或专用光电吸边器。
6. 褪捻检测辊距离机脚底平面 6500mm。

#### Technical Parameters

1. Machine width: 1800~2800mm.
2. Design speed: 20~80m/min.
3. Feeding and doffing: rope feeding, open width doffing.
4. Detwisting type: automatic detwist, or manual press the button to detwist.
5. Centering device: Centering machine or photoelectrical selvedge guider.
6. The distance between untwisting inspecting roller and floor is 6500mm.





## LMH101 轧水烘燥联合机

### LMH101 Squeezing & Drying Machine

### LMH101 Exprimidor y secador



#### 技术参数

1. 工作幅度: 1800~3600mm
2. 车速: 35~70m/min (设计车速)
3. 进出布方式: 平幅进布、平幅落布

#### 产品用途

本联合机供纯棉、化纤及其混纺织物进行平幅轧水烘燥。

#### Application

It is used to flat squeeze and dry full cotton, chemical fiber and blended fabrics.

#### 设备工艺流程

平幅进布 → 电动吸边 → 三辊轧车 → 自动展幅 → 单柱、二柱或三柱烘燥机 → 平幅落布。

#### Process Flow

Open width feeding fabric → electric edge guider → three rollers padder → automatic spreading fabrics → drying cylinders → open width doffing

#### Technical Parameters

1. Working width range: 1800~3600mm
2. Machine speed: 35~70m/min (design speed)
3. Fabric feeding and doffing: open width feeding & doffing

## WMH974 无张力高效蓬松烘燥机

### WMH974 High Efficiency Tension-Free Dryer

### WMH974 Secador de alta eficiencia libre de tensión



#### 技术参数

1. 工作幅度: 1800mm 2400mm 3200mm
2. 整机功率: 120 型 22kw, 180 型 34kw, 240 型 44kw, 320 型 52kw
3. 设计蒸汽压力: 0.6MPa
4. 蒸发水量: 380kg/h
5. 设计最高温度: 140℃
6. 设计车速: 2~20m/min(视含水率及织物厚薄而定)
7. 机内容布量: 15m
8. 出布折叠宽度: 0.5~1m

#### 产品用途

本产品适用于各类机织品和针织品的连续性烘燥加工，对于长毛圈织物、螺旋毛圈织物、长毛绒、丝绒、天鹅绒、灯芯绒、割绒毛巾、浴巾、地巾等厚重织物特别适用，处理后的织物纤维板结现象消失，柔软性、蓬松度有明显的提高，是复制行业提高产品档次、增加企业经济效益的最佳设备。

#### Application

It is used for continuous drying process of various kind of weaving product and knitting product, esp. suitable for heavy fabrics including long pile loop fabric, spiral pile loop fabric, plush, velvet, velure, corduroy and velvet pile towel, batch towel and floor tower etc., by which, the treated fabric has no fiber hardening with improved softness and fluffiness, thus being the best equipment for reproduction field to upgrade the product and increase economic benefit.

#### Technical Parameters

1. Roller width: 1800mm 2400mm 3200mm
2. Total power: 120 type 22kw, 180 type 34kw, 240 type 44kw, 320 type 52kw
3. Steam pressure: 0.6MPa
4. Evaporation capacity: 380Kg/h
5. Max. temperature: 140℃
6. Machine speed: 2-20m/min (Depend on moisture percentage and fabric thickness.)
7. Fabric content in the dryer: 15m
8. Plaited width of delivered fabric: 0.5-1m



## BM 拉幅定型机 BM Stenter Frame BM Rama



### 产品用途

专供棉布、涤棉、涤纶、化纤、弹力布, 在退浆、丝光之后拉幅定型整理之用。

### Application

This machine is mainly used for stentering, setting, finishing the cotton fabric, poly-cotton fabric, polyester fabric, elastic fabric after desizing, mercerizing.

### 技术参数

1. 机器公称宽度: 1800~3600mm
2. 机械车速: 10~180m/min
3. 热源: 天然气/导热油/电/蒸汽
4. 温度: 60~220°C

### Technical Parameters

1. Machine nominal width: 1800~3600mm
2. Design mechanical speed: 10~180m/min
3. Heat source: natural gas / heat-transfer oil / electricity / steam
4. Temperature: 60~220°C

### 工艺流程

平幅进布 → 紧布装置 → 红外线对中机 → 光电整纬装置 → 纠偏扩幅展开装置 → 螺纹扩幅辊 → 前超喂 → 探边 → 上针/上铗 → 烘房定型 → 冷风冷却 → 脱针/脱铗 → 后超喂 → 冷水辊冷却 → 平幅摆式落布/打卷出布。

### Process Flow

Open-width feeding fabric → fabric tensioning device → infrared centering device → photoelectric weft straightener → rectifying deviation, expanding, spreading device → screw thread spreading roller → front overfeeding device → edge detector → pinning on / clipping on → chambers setting → cold air cooling → pinning off / clipping off → back overfeeding → cold water roller for cooling → open-width swinging doffing / batching doffing.

用户可以根据具体工艺要求定制机器流程。

The machine process can be customized according to the user's technological requirements.



## 180~360 型长环蒸化机

### 180~360 Loop Steamer

### 180~360 Vaporizador

#### 机器用途

本机适用于各种天然纤维、合成纤维、化学纤维及其混纺的机织物、针织物、无纺布印花后的蒸化固色和涂料印花后的烘焙，适用于各种染料，织物克重范围 50~800g/m<sup>2</sup>。

#### Application

This machine is suitable for various kinds of fabrics for steaming fixation color after printing, baking after pigment printing, such as natural fiber, synthetic fiber, chemical fiber and blended woven fabric, knitted fabric, non-woven fabric. It's suitable for all kinds of dyes. Fabric weight range is 50~800g/m<sup>2</sup>.



#### 技术参数

1. 机械门幅：1800~3600mm
2. 容布量：140~420m（调节量：70米/段）
3. 进布方式：前进前出，单幅单层
4. 机器车速：10~80m/min
5. 环长：1.25~2.5m，调节比 1:2
6. 蒸化时间：4~70min（视容布量和布速而定）
7. 供应蒸汽最小压力：0.3MPa
8. 工艺及温度：饱和蒸汽:100℃；低温过热蒸汽:115~150℃；高温过热蒸汽:150~180℃以上；干热空气:150~180℃以上
9. 适应范围：高低温两用（活性、分散、雕印、酸性工艺）

#### Technical Parameters

1. Mechanical width: 1800~3600 mm
2. Capacity: 140~420mm (Adjusting variable: 70m/section)
3. Fabric feeding mode: front feeding, front outlet, single width, single layer
4. Machine speed: 10 ~80m/min
5. Loop length: 1.25m~2.5m, regulating ratio: 1:2
6. Steaming time: 4~70min (depend on fabric content and speed)
7. Min. pressure of steam supply: 0.3MPa
8. Technology and temperature: saturated steam 100℃; low temperature superheated steam 115~150℃; high temperature superheated steam above 150~180℃; hot and dry air above 150~180℃
9. Range of application: dual use of high temperature and low temperature (reactive process, disperse process, discharge printing process, acid process)





**LMH443B 预缩整理机**  
**LMH443B Sanforizer**  
**LMH443B Sanforizadora**



#### 设备用途

本机适用于纯棉、化纤、麻及混纺织物的后整理，为织物防缩处理及改善织物手感之用，使织物具有良好的尺寸稳定性。

#### Application

This machine is after treatment line, for processing the fabrics of cotton, polyester, hemp and blended fabrics. It pre-shrinks the fabric to prevent the fabrics from shrinkage, improves the fabrics touch feeling and makes fabrics get good dimensional stability.

#### 设备工艺流程

平幅进布→光电对中→蒸汽给湿箱→蒸汽给湿辊→单辊拉斜→橡胶毯预缩机（仿蒙福茨或莫里森）→呢毯整理机→平幅落布

#### Process Flow

Open-width feeding fabric → photoelectrical centering device → steam moistening box → steam moistening roller → single-roller rectifying the skewing → rubber blanket preshrinking machine (similar to Monforts or Morison product) → felt blanket finishing machine → open-width doffing

#### 技术参数

1. 机器公称门幅：1800~3200mm
2. 机械车速：5~100m/min
3. 预缩率：≤16%，缩水率≥3%
4. 热源：蒸汽压力 0.55MPa
5. 压缩空气压力：0.7MPa
6. 传动方式：交流变频调速

#### Technical Parameters

1. Mechanical width: 1800~3200mm
2. Mechanical speed: 5~100m/min
3. Preshrinking rate: ≤16%, shrinkage rate: ≥3%
4. Heat source: steam pressure 0.55Mpa
5. Compressed air pressure: 0.7 MPa
6. Drive mode: AC variable frequency speed regulating.

#### 主要配置

1. 橡胶毯：优质国产，帝牌或邓禄普。
2. 不锈钢承压辊辊体直径为Φ616mm。
3. 呢毯整理机：大烘筒（夹层式）外径Φ2000mm和Φ800烘筒组成。呢毯厚度7mm。

#### Machine Configuration

1. Rubber blanket: high quality domestic brand, Daytex or Dunlop brand.
2. Diameter of stainless steel pressure roller is Φ616mm.
3. Felt blanket finishing machine: composed of drying cylinder(sandwich structure) with outer diameter Φ2000mm and drying cylinder Φ800mm. The thickness of the felt blanket is 7mm.



## LMH003 烧毛轧水烘干联合机

### LMH003 Singeing & Squeezing & Drying Line

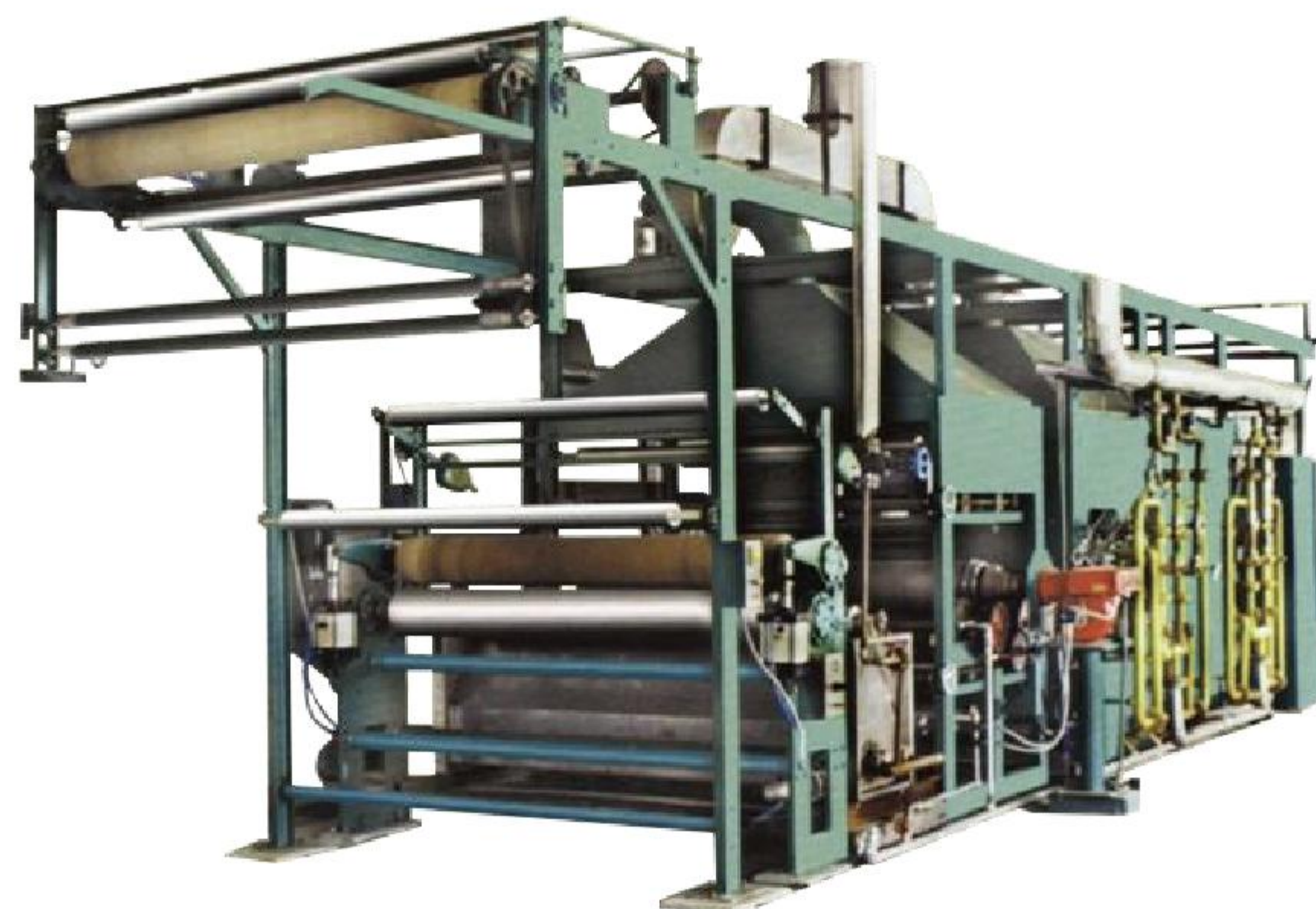
#### LMH003 Chamuscado, exprimido y secado en línea

#### 应用

本机适用于纯棉、涤纶、化纤及其混织物牛仔布烧毛、轧水、烘干。有效地除去织物表面的茸毛，保证织物平整。

#### Application

This machine is used for singeing, squeezing, drying different kinds of fabrics, such as cotton, polyester, chemical fiber and blended fabrics, denims; It can remove the fuzz on the fabrics' surface and keep fabric smooth.



火口 Burner



除尘装置 Dust Collector

#### 技术参数

1. 公称幅宽: 1800 – 3600mm
2. 机械车速: 22.5-90 米/分
3. 火口形式: 2 支仿奥斯托夫火口用于正面烧毛、2 支双喷射式火口用于反面烧毛
4. 热源: 天然气、液化气, 压力 0.5kg/cm<sup>2</sup>

#### Technical Parameters

1. Nominal width: 1800 - 3600mm
2. Mechanical speed: 22.5-90 m/min
3. Burners mode: two pieces of copy Osthoff burners for front singeing, two pieces of double jet burners for reverse side singeing
4. Heat source: natural gas or liquefied gas, pressure 0.5kg/cm<sup>2</sup>

## 直辊布铗丝光机

### Chainless & Clipless Mercerizing Range

#### Mercerizadora sin pinzas ni cadena

#### 设备用途

本联合机主要适用于纯棉、涤棉及棉混纺织物丝光之用，织物在张力状态下浸轧浓碱溶液，使浓碱液与棉纤维充分溶胀反应，然后在经纬向张力下冲洗去碱，使棉纤维组织形态发生永久变化，从而使织物尺寸稳定、纤维强度增加、提高织物对染料的上染率，织物具有丝般光泽，手感舒适。

#### Application

This machine is mainly suitable for mercerizing pure cotton, poly-cotton and cotton blended fabric. Fabric dip-padding in concentrated alkaline solutions under tension condition, makes concentrated alkaline solution fully swelling react with cotton fiber, then wash to remove the alkali in warp and weft direction, to make organization form of cotton fiber to produce permanent change, the fabric has stable size, better fiber strength, better dye-uptake, fabric has silky luster, comfortable hand feeling.

#### 设备工艺流程

平幅进布(带远红外光电对中)→直辊丝光箱→丝光轧车→直辊去碱箱→丝光轧车→张力架→布铗拉幅机→张力架→二辊重轧车→去碱蒸箱→二辊轧车→去碱蒸箱→轧车→(高效蒸洗箱→二辊轧车)\*N→平洗槽→高效轧车→烘干机→平幅摆辊落布

#### Process Flow

Open-width feeding fabric (include infrared photoelectrical centering) → chainless mercerizing box → mercerizing padder → chainless alkali eliminating box → mercerizing padder → tension frame → clip stentering device → tension frame → two-roller heavy padder → alkali eliminating steaming box → two-roller padder → alkali eliminating steaming box → padder → (high efficient steaming and washing box → two-roller padder) \*N → open-width washer → high efficient padder → dryer → open-width swing roller for doffing





## 3200WD 验布卷布机 3200WD Cloth Inspecting and Rolling Machine 3200WD Revisadora y enrolladora

### 产品特点

1. 适用于纺织、针织、经编、合成革、无纺布等织物的卷验。
2. 采用双频控制张力，可任意调节松紧（可调到无张力）。
3. 采用台湾液压系统和红外线光电自动对边。
4. 采用国内最先进的电子计长控制仪。
5. 机器可装配：①电子秤 ②ERP 疵点采集系统及打印装置 ③金属探测器 ④自动错边功能 ⑤无布自停功能 ⑥卷取差速装置 ⑦色标对边 ⑧电脑接口 ⑨自动裁刀

### Product Features

1. It is suitable for rolling and inspecting fabric, such as woven fabric, knitted fabric, warp knitting, synthetic leather, non-woven fabric, etc.
2. Tension is controlled by dual frequency converter, and can be adjusted discretionarily (even adjust to tension free).
3. Adopt Taiwan hydraulic system and infrared ray photoelectric automatic edge alignment.
4. Use the domestic most advanced electronic measure length control instrument.
5. Optional parts can be assembled: ① Electronic scale ② ERP defect acquisition system and printing equipment ③ Metal locator ④ Automatic misalignment function ⑤ Automatic stop if there is no fabric ⑥ Coiling differential gear ⑦ Color code edge alignment ⑧ Computer connector ⑨ Automatic cut-off knife

### 技术参数

1. 适用幅宽：1800mm~3600mm
2. 卷取直径：≤600mm
3. 卷验速度：0~100m/min
4. 纠编类型：液压
5. 主电机功率：0.75/0.4~2.2/0.75(KW)
6. 整机功率：3KW~4KW
7. 张力控制：双变频

### Technical Parameters

1. Suitable width: 1800mm~3600mm
2. Coiling diameter: ≤600mm
3. The speed of rolling and inspecting: 0~100m/min
4. Deviation rectifier type: hydraulic
5. Main motor power: 0.75/0.4~2.2/0.75(KW)
6. Total power: 3KW~4KW
7. Tension control: Dual frequency converter



## 坯布打卷机 Grey Cloth Batch Winder Enrolladora para tela en crudo

### 用途

适用于织物的前处理加工，在进行退煮漂、染色或其他工序前将小卷织物打成大卷，以便下道工序加工。

### Application

It is suitable for pre-processing fabric. It makes small rolls of fabric into large ones before desizing, bleaching, dyeing or other processes, which makes it more convenient to process in the next step.

### 设备组成

退卷容布槽—进布架—卷布机—A 字架（A 字用户自理）

### Process Flow

Unwinding fabric container — fabric feeding frame — winding machine — A-Frame (A-Frame is provided by user)

### 技术参数

1. 机械门幅：1200mm—3600mm
2. 机械车速：10—260m/min
3. 总功率：5.5—11KW（由门幅大小定）
4. 成卷直径：≤1800mm
5. 退卷直径：≤1000mm

### Main Parameters

1. Mechanical width: 1200mm - 3600mm
2. Mechanical speed: 10-260m /min
3. Power: 5.5 - 11KW
4. Roll diameter: ≤1800mm
5. Unwinding diameter: ≤ 1000 mm

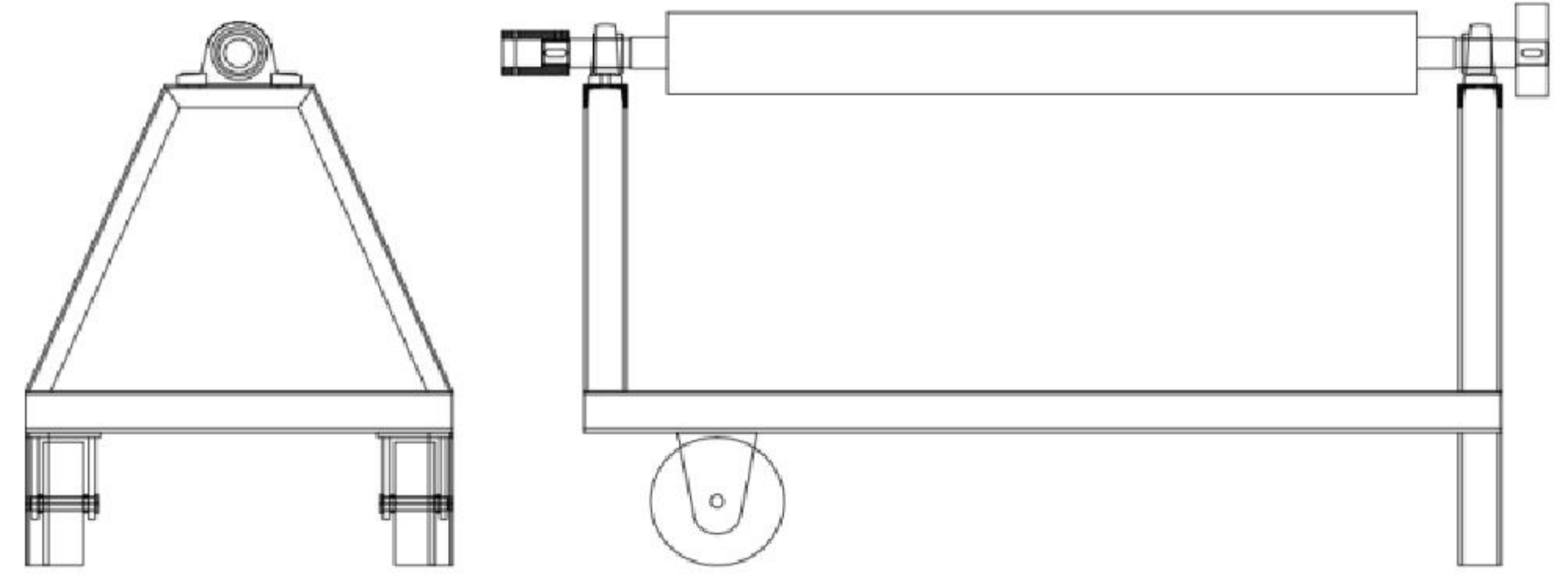




## A 字架 A-Frame A-Forma caballetes

主要用于各种织物的卷装、堆布，使织物布面整洁、整齐、卷径大。包含辊和槽钢架。辊包覆 SUS304 不锈钢。

A-Frame is mainly used for fabric roll packages and piling up fabric, which make fabric neat and tidy with big roll diameter. The A-frame includes roller and U-steel frame. The roller is coated with SUS304.



## 万向节驱动小车 Cardan Joint Drive Car Máquina de tracción de cardán

输出力矩：16-25N

转速：1400rpm

轴头：φ 45mm

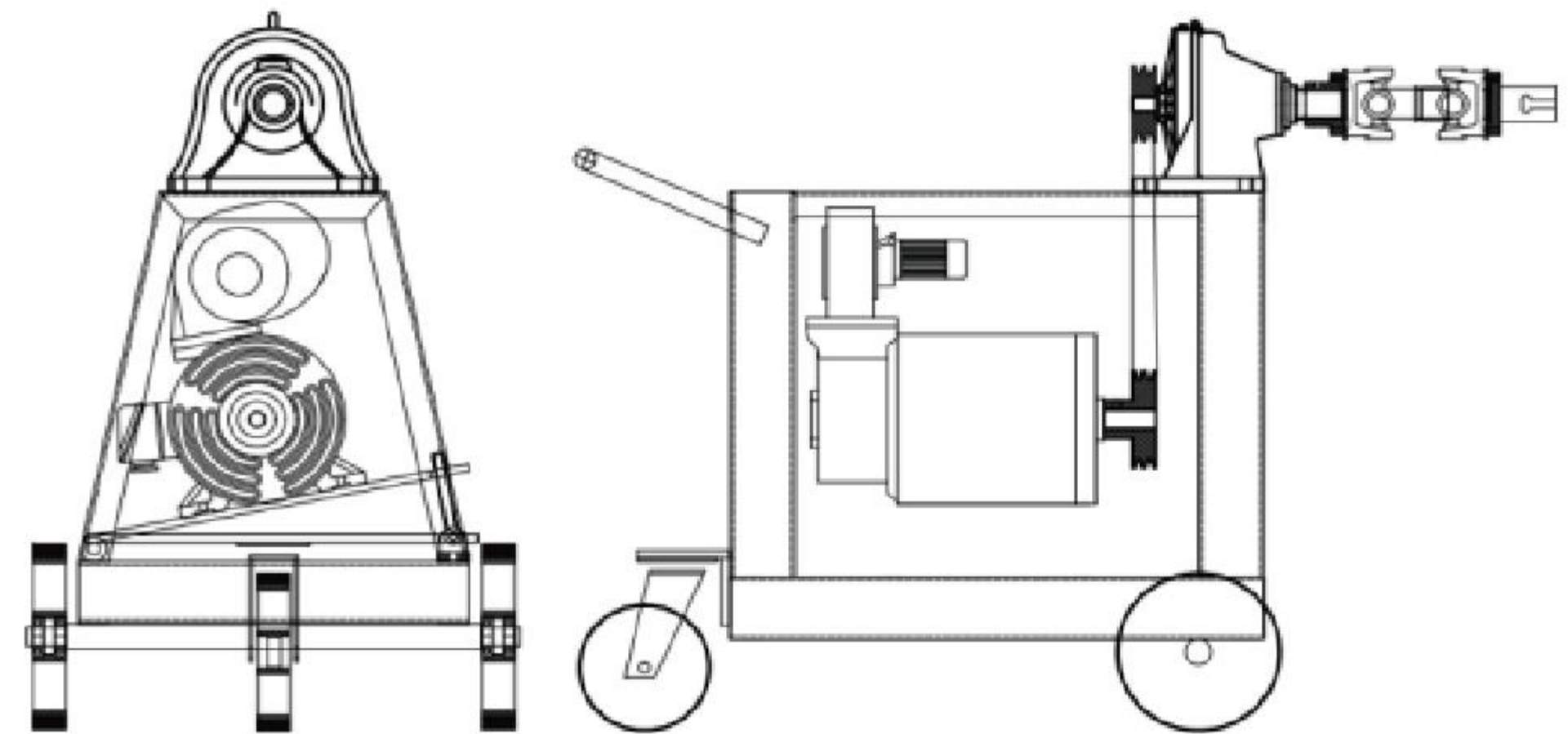
外形尺寸：1050\*760\*1010mm

Output torque: 16-25N

Rotation speed: 1400rpm

Joint diameter: φ 45mm

Boundary dimension: 1050\*760\*1010mm



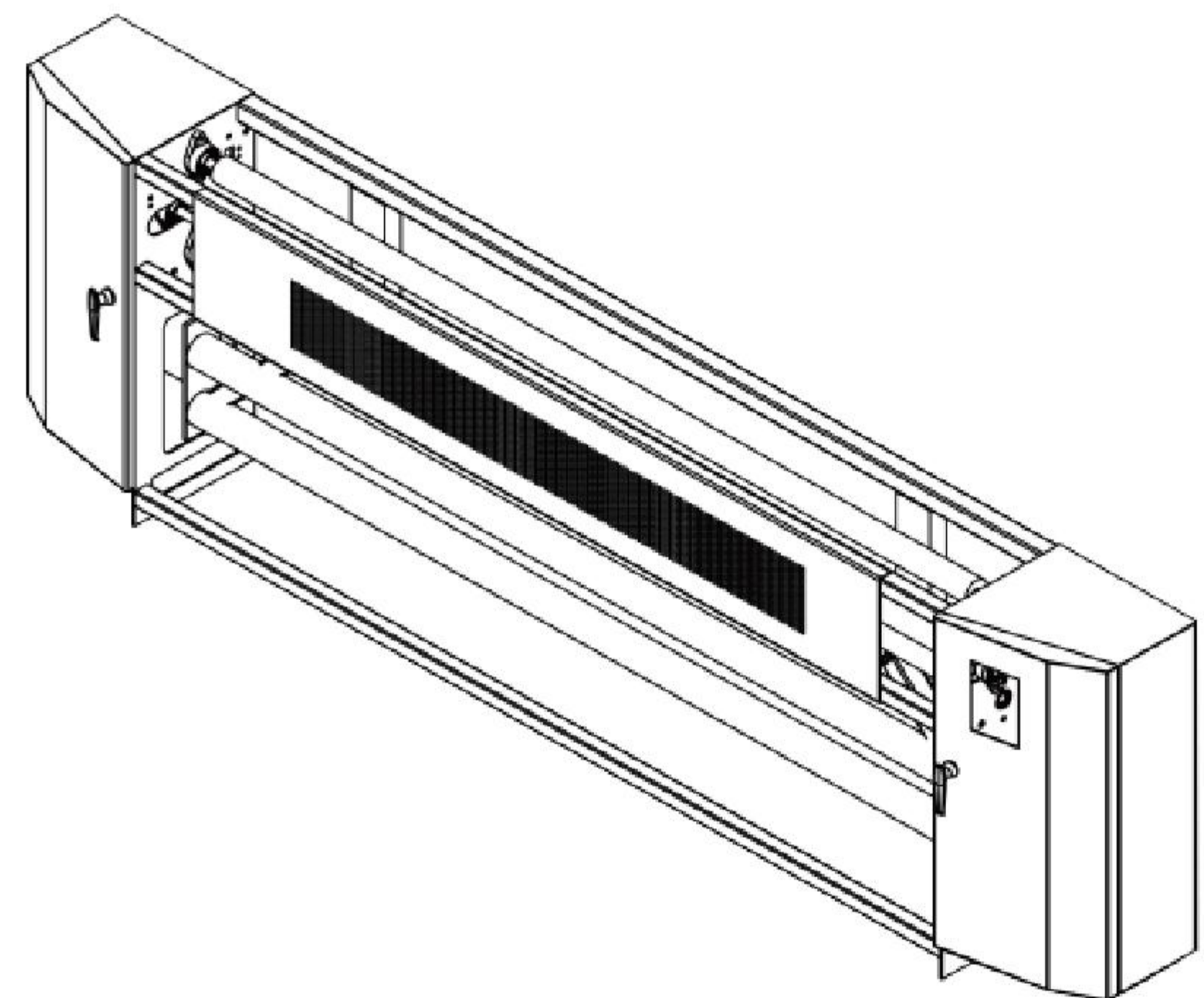
## 纠偏对中机 Infrared Centering Machine Centrador infrarojo

红外线对中机，广泛应用于印染行业烧毛机、水洗机、退煮漂、丝光机、定型机、印花机、干燥机等机械设备上，能迅速有效地展开织物的折皱，快速平稳地纠正织物的偏移，不受织物的材质和厚薄之影响，保证织物平坦、居中地进入加工设备。

本机由三辊开幅和二辊纠偏两部分组成。开幅效果好，纠偏精度高。

The infrared centering device is widely used in the dyeing and printing industry, such as singeing machine, washing machine, desizing & scouring & bleaching machine, mercerizing machine, stenter frame, printing machine, drying machine etc, it can efficiently spread the cockling fabrics, rapidly and stably rectify the skewing, ensure that the fabrics can evenly enter into the machine from the center.

This machine is composed of spreading roller and skewing rectifying roller. It has good spreading efficiency, and high accuracy of rectifying skewing.





Buentex Machinery Trading Co.,Ltd.

Add.: Guangshi Road NO. 948, Liangxi Dist., Wuxi City, P.R. China Post Code: 214000

Contact: Jennifer Yin

Tel. / Wechat: +86 18168890996

Email: jennifer8992@hotmail.com

Web: [www.buentex.com](http://www.buentex.com)

Contact: Zoe Hu

Tel. / Wechat: +86 18051514001

Email: zoehuyy@hotmail.com